

# Product data sheet

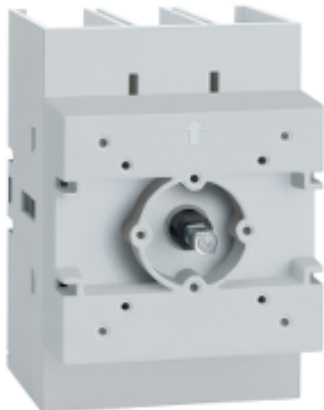
## Characteristics

# VLS3P100D2

Disconnect switch, TeSys VLS, body switch, 100A, 50HP at 480VAC, UL98, three phase, 50kA SCCR, size 2, door mount

Product availability: Stock - Normally stocked in distribution facility

Price\*: 145.38 USD



### Main

Range	TeSys
Product name	TeSys VARIO LS
Device short name	VLS3P
Product or Component Type	Switch body

### Complementary

Mounting Support	Door
Performance level	High performance
Poles description	3P
Contacts type and composition	3 NO
Color	Gray
[Ue] rated operational voltage	600 V AC 50/60 Hz UL 508
Network type	AC
Network Frequency	50/60 Hz
Maximum Horse Power Rating	30 Hp 200/208 V AC 30 Hp 240 V AC 50 Hp 480 V AC 50 Hp 600 V AC 5 Hp 120 V AC 10 Hp 240 V AC
[Ue] rated operational voltage	690 V AC 50/60 Hz
Rated operational power in W	55 KW 400 V AC-23A) 45 KW 500 V AC-23A) 45 KW 690 V AC-23A)
[Ie] rated operational current	100 A Ue: 600 V UL98 100 A AC-21A Ue: 400 V 100 A AC-21A Ue: 500 V 100 A AC-21A Ue: 690 V 100 A AC-22A Ue: 400 V 100 A AC-22A Ue: 500 V 100 A AC-22A Ue: 690 V 100 A AC-23A Ue: 400 V 80 A AC-23A Ue: 500 V 47 A AC-23A Ue: 690 V

[Ith] conventional free air thermal current	100 A 131 °F (55 °C)
[Ithe] conventional enclosed thermal current	100 A
Making capacity	1000 A 690 V AC-23A 150 A 690 V AC-21A 300 A 690 V AC-22A
Breaking capacity	150 A 690 V AC-21A) 300 A 690 V AC-22A) 800 A 690 V AC-23A)
Product compatibility	Fuse J 100 A maximum: 50 kA at 600 V AC
Rated conditional short-circuit current	50 KA 400 V 100 A gG
[Icm] rated short-circuit making capacity	3550 A 690 V
Intermittent duty class	Class 120 - 60 %
[Uimp] rated impulse withstand voltage	8 KV
[Icw] rated short-time withstand current	2500 A 690 V 1 s
Mechanical durability	30000 Cycles
Electrical durability	30000 Cycles AC-21
AWG gauge	AWG 12...AWG 1 copper
Connections - terminals	Power circuit screw clamp terminals 0.08 in <sup>2</sup> (50 mm <sup>2</sup> ) solid Power circuit screw clamp terminals 0.11 in <sup>2</sup> (70 mm <sup>2</sup> ) flexible - without cable end
Tightening torque	Power circuit 44.25...53.10 lbf.in (5...6 N.m) screw clamp terminals
Maximum Height	2.76 In (70 mm)
Maximum Width	2.76 In (70 mm)
Maximum Depth	3.94 In (100 mm)
Net Weight	0.80 Lb(US) (0.365 kg)

## Environment

Standards	UL98 CSA C22.2 No 4 IEC 60947-3
Product Certifications	CULus GL
IP degree of protection	IP20 conforming to IEC 60529
Mechanical robustness	Vibrations 2...100 Hz Fc 0.7 g) IEC 60068-2-6 Shocks 11 ms Ea 15 gn) IEC 60068-2-27
Ambient Air Temperature for Operation	-13...131 °F (-25...55 °C)
Fire resistance	1760 °F (960 °C) IEC 60695-2-11

## Ordering and shipping details

Category	21734 - TESYS VLS DISCONNECT SWITCHES
Discount Schedule	CP1
GTIN	03606481156570
Nbr. of units in pkg.	1
Package weight(Lbs)	15.41 Oz (437 g)
Returnability	Yes
Country of origin	IT

## Packing Units

Unit Type of Package 1	PCE
Package 1 Height	3.15 In (8 cm)
Package 1 width	3.35 In (8.5 cm)
Package 1 Length	4.72 In (12 cm)

## Offer Sustainability

REACH Regulation	<a href="#">REACH Declaration</a>
REACH free of SVHC	Yes
EU RoHS Directive	Compliant <a href="#">EU RoHS Declaration</a>
Toxic heavy metal free	Yes
Mercury free	Yes
RoHS exemption information	<a href="#">Yes</a>
China RoHS Regulation	<a href="#">China RoHS Declaration</a>

Product Life Status : **Commercialised**